

S.E. 1/4
SECTION 19, T.7N., R.1E., S.L.B. & M.

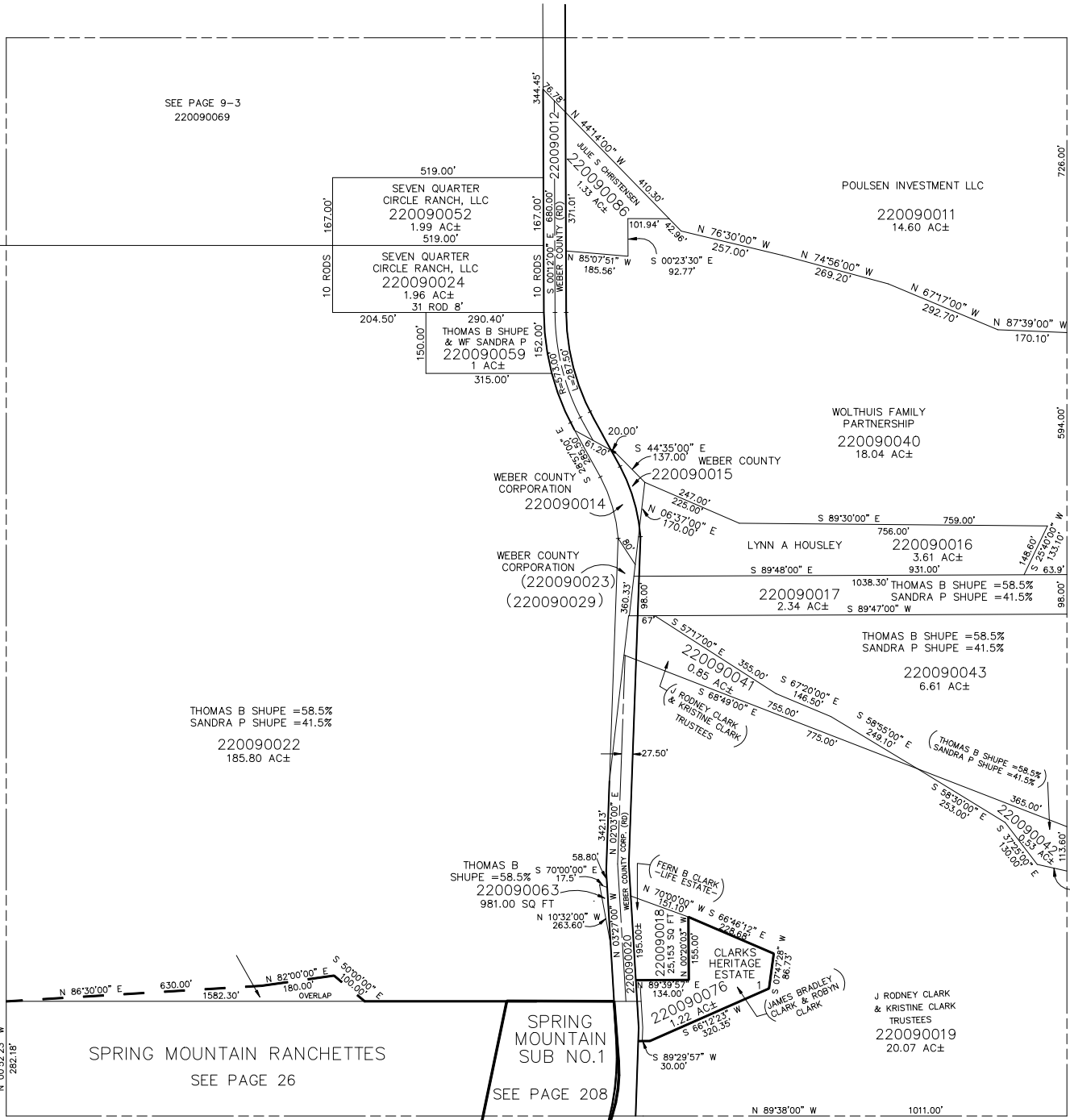
LIBERTY DISTRICT
SCALE 1" = 200'

TAXING UNIT: 36

SEE PAGE 9

SEE PAGE 9-2

SEE PAGE 14



SEE PAGE 9-3
220090069

519.00'
SEVEN QUARTER
CIRCLE RANCH, LLC
220090052
1.99 AC±
519.00'

204.50'
SEVEN QUARTER
CIRCLE RANCH, LLC
220090024
1.96 AC±
31 ROD 8'

290.40'
THOMAS B SHUPE
& WF SANDRA P
220090059
1 AC±
315.00'

POULSEN INVESTMENT LLC
220090011
14.60 AC±

WEBER COUNTY CORPORATION
220090014

WEBER COUNTY CORPORATION
(220090023)
(220090029)

WEBER COUNTY CORPORATION
220090015

LYNN A HOUSLEY
220090016
3.61 AC±

THOMAS B SHUPE = 58.5%
SANDRA P SHUPE = 41.5%
220090017
2.34 AC±

THOMAS B SHUPE = 58.5%
SANDRA P SHUPE = 41.5%
220090043
6.61 AC±

THOMAS B SHUPE = 58.5%
SANDRA P SHUPE = 41.5%
220090022
185.80 AC±

THOMAS B SHUPE = 58.5%
SANDRA P SHUPE = 41.5%
220090063
981.00 SQ FT

FERN B CLARK
(LIFE ESTATE)
220090018
25,143 SQ FT

CLARKS HERITAGE ESTATE
220090076
2.22 AC±

J RODNEY CLARK & KRISTINE CLARK TRUSTEES
220090019
20.07 AC±

SPRING MOUNTAIN RANCHETTES
SEE PAGE 26

SPRING MOUNTAIN SUB NO.1
SEE PAGE 208